

TWO SIDES



S TO EVERY



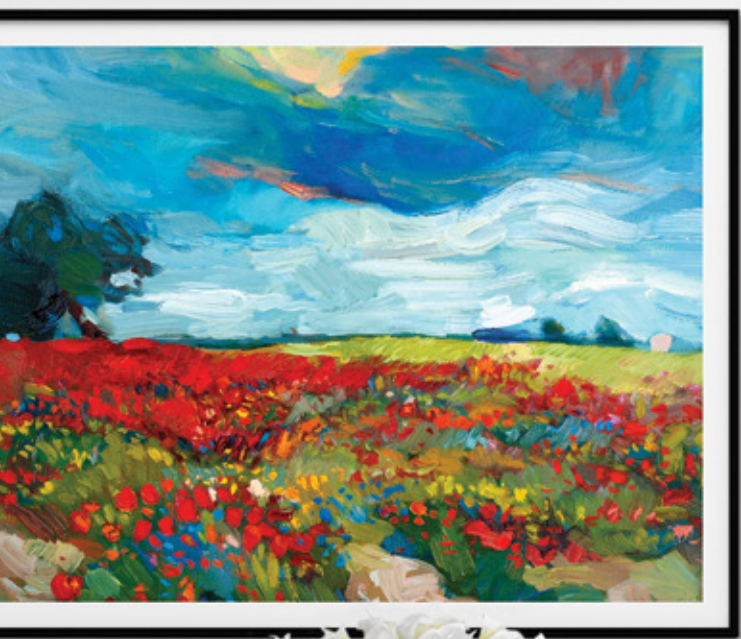
Forget about the old standard in home design. New home builds have beautiful touches that add character and individuality, and the interiors are just as carefully styled. There's a demand for homes with curated style, character and colour—both inside and out.

All Weather Windows' PVC windows are already known for their innovative designs and unique features. But options for customizing

PVC windows—particularly with colour—have traditionally been limited. Painting is always an option, though it lacks permanence. And exterior aluminum cladding is beautiful, but can't be applied to the interior of the frame.

Now there's another way to customize windows on the inside and out.

STORY.



Front cover: Apex 9100 in Mattex Kitami
This spread: Apex 9100 in Black

FROM THE INSIDE OUT

The perfect harmony of style and durability, high-performance acrylic-based wrap provides our customers with an array of options previously not possible for PVC windows.

This beautiful and long-lasting alternative has been used in Europe for decades, and now All Weather Windows is proud to offer this process to our customers in the Canadian marketplace.

With the choice of 10 stunning exterior and 2 interior acrylic wrap finish options including stainable fir, your palette is almost limitless.

SERIES AVAILABILITY

ACRYLIC WRAP	PRODUCT SERIES									
	Terrano 2100	Terra 2700	Ascent 6100	Alpine 6700	Apex 9100	Summit 9700	Apex Alloy 9950	Double Slider 5600	Viscount PD	Vantage PD
Interior					•		•			•*
Exterior			•*		•	•		•*		•

*Black finish only

ACRYLIC WRAP OPTIONS

APEX 9100 COLOUR COMBINATION OPTIONS

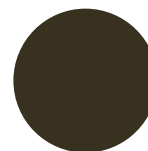
INTERIOR COLOURS	EXTERIOR COLOURS									
	White	Wicker	Black	Arch. Brown	Clear Anodized	Chocolate Brown	Anthracite Grey	Pebble	Mattex Kitami	Sheffield Oak Concrete
White PVC	•		•	•	•	•	•	•	•	•
Wicker PVC		•	•	•	•	•	•	•	•	•
Black	•		•	•			•		•	•
Stainable Fir	•	•	•				•		•	•

EXTERIOR WRAP OPTIONS

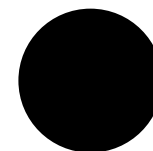
STANDARD SOLID



Anthracite Grey

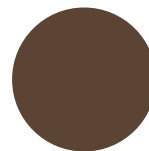


Architectural Brown



Black

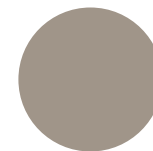
PREMIUM SOLID



Chocolate Brown



Clear Anodized



Pebble

PREMIUM TEXTURED WOODGRAIN



Mattex Kitami



Sheffield Oak Concrete

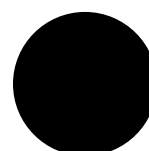


Turner Oak Malt



Turner Oak Toffee

INTERIOR WRAP OPTIONS



Black



Stainable Fir

VANTAGE PATIO DOOR COLOUR COMBINATION OPTIONS

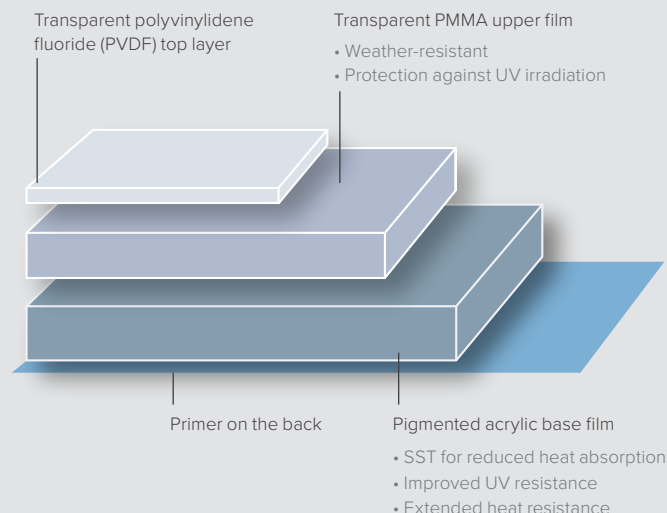
INTERIOR COLOURS	EXTERIOR COLOURS								
	White	Wicker	Black	Arch. Brown	Anthracite Grey	Mattex Kitami	Sheffield Oak Concrete	Turner Oak Malt	Turner Oak Toffee
White PVC	•		•	•	•	•	•	•	•
Wicker PVC		•	•	•	•	•	•	•	•
Black	•		•	•	•	•	•	•	•

Note: Colours may not be exactly as shown due to printing limitations.

THE APPLICATION PROCESS

The wrap, once applied, bonds to the window profile with an immense strength that is fostered through our polyurethane reactive (PUR) hot melt process. The PUR reacts chemically when exposed to atmospheric moisture at the time of lamination, creating a cross link between profile and wrap that results in a strong, durable bond. This bond cannot be reactivated and will withstand the harshest conditions, from extreme heat to extreme cold.

- The PVC profile is passed through air blowers to remove debris and any static charges.
- The primer is applied and heated to 50°C—this ensures that the PVC permanently bonds to the acrylic wrap.
- Glue is applied to the acrylic wrap before passing the profile and wrap through the machine, which uses rubber rollers to make the PVC and acrylic wrap look like a single component.



ACRYLIC WRAP

LASTING POWER

Acrylic wrap is a high-performance acrylic-based product that is permanently bonded to the PVC window frame. Once only available as an exterior application, the wrap now provides homebuilders and homeowners with the ability to have different finishes on the inside and outside of their window frames. It is weather- and ultraviolet-resistant and retains its finish and colour throughout its service life.

The wrap also features a contemporary stipple emboss finish that pairs well with modern home exteriors and interiors. Its low surface tension means that it can be wiped clean easily and it also resists chalking, cracking and fading—its durability is greatly superior to basic paint-covered window frames, and is backed by a 10-year warranty.*

Acrylic wrap is currently available in a series of finishes suitable for a variety of architectural and interior design styles. Acrylic wrap is the superior choice for adding colour to PVC windows and curb appeal to new homes.

CARE & MAINTENANCE

Everyday cleaning can be done with a household cleaner or with a commercial cleaner like TSP, when required. For more information on cleaning, staining and painting, please visit allweatherwindows.com.

STYLE MEETS SCIENCE

Our acrylic wrap has a polymethyl methacrylate (PMMA) and polyvinyl fluoride film (PVDF) multi-layer construction. The protective surface is made up of a combination of transparent PVDF as the top layer, followed by the transparent PMMA middle layer. The base layer is a pigmented acrylic base film that includes infrared reflective pigments for Solar Shield Technology, which reflects heat away from the window. This unique combination of polymers provides reduced heat absorption, improved UV resistance and excellent long term weathering.

The combination of these layers and their unique qualities gives acrylic wrap its extreme durability and resistance to weather, along with excellent colour fastness and gloss retention.

WARRANTY

Performance: fading or other performance-related issues that may occur with acrylic wrap are covered under warranty for **10 years**.*

Lamination: the lamination process of acrylic wrap is warrantied for **10 years** through All Weather Window on all wrap colours.

*Chocolate Brown and Stainable Fir are backed by a 5-year warranty. Mattex Kitami is backed by a 7-year warranty.

PICK YOUR SIDES

EDMONTON

18550 118A Avenue NW
Edmonton, Alberta
T (800) 638-5709

CALGARY

102 - 7880 66 Street SE
Calgary, Alberta
T (888) 932-3387

LETHBRIDGE

3753 5 Avenue N
Lethbridge, Alberta
T (877) 327-0701

WINNIPEG

124 Terracon Place
Winnipeg, Manitoba
T (800) 892-5340



VANCOUVER

A101 - 9355 198 Street
Langley, British Columbia
T (800) 518-8338

REGINA

715 Henderson Drive
Regina, Saskatchewan
T (888) 672-2202

SASKATOON

110 - 3810 Arthur Rose Avenue
Saskatoon, Saskatchewan
T (800) 589-9899



This spread: Apex 9950 in Stainable Fir interior wrap
Back cover: Apex 9100 in Sheffield Oak Concrete

