

VANTAGE PATIO DOOR STRAP ANCHOR INSTALLATION



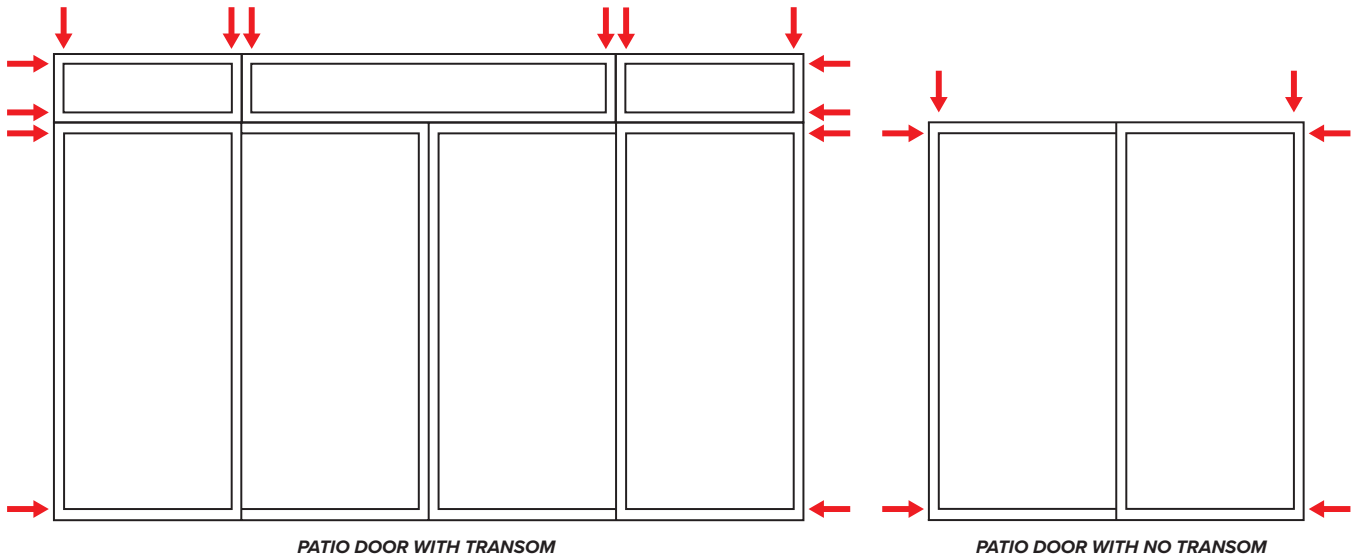
ENSURE THAT THE BELOW INSTRUCTIONS ARE READ IN FULL BEFORE PROCEEDING. IMPROPER INSTALLATION MAY RESULT IN INJURY, PRODUCT DAMAGE OR OPERATING ISSUES AND MAY VOID PRODUCT WARRANTY.

STRAP ANCHORS

In addition to standard installation anchors, strap anchors are required for added support at the corners and mullion joints of the patio door.

LOCATIONS

Strap anchors should be installed within 100mm of corners and mullion connection joints as shown below.



INSTALLATION

1. Install strap anchor into frame at locations noted above. To install, insert strap anchor into anchor channel on outside of patio door frame and twist to lock in place (*see steps A - D*)



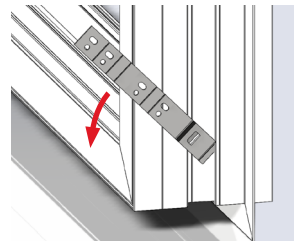
Step A

Insert strap anchor vertically into frame anchor channel on outside of patio door frame



Step B

Slowly rotate the strap anchor inwards, ensuring the base of the anchor is under the grooves in the anchor channel



Step C

Continue rotating the the strap anchor inwards until it is in a horizontal position



Step D

Ensure the strap anchor is securely fastened to the anchor channel on the patio door frame

3. Install patio door as per standard installation instructions (*see back side of included glass decal on patio door*)
4. Attach strap anchor to framing directly through the rough opening jamb. For increased performance, bend strap around inside of rough opening and fasten from the inside as shown in section detail (*figure E*)

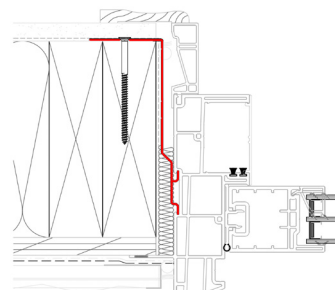


Figure E